




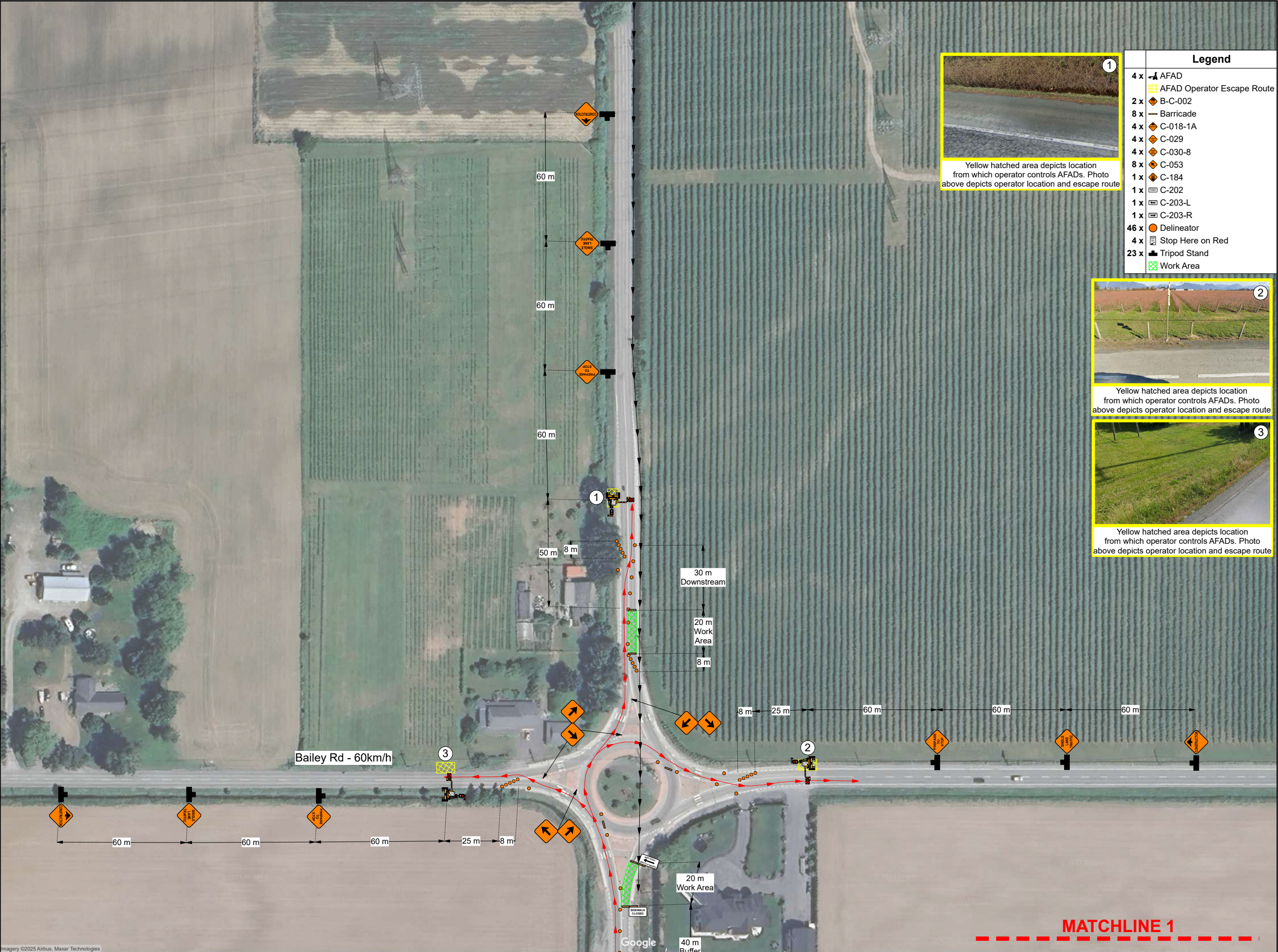








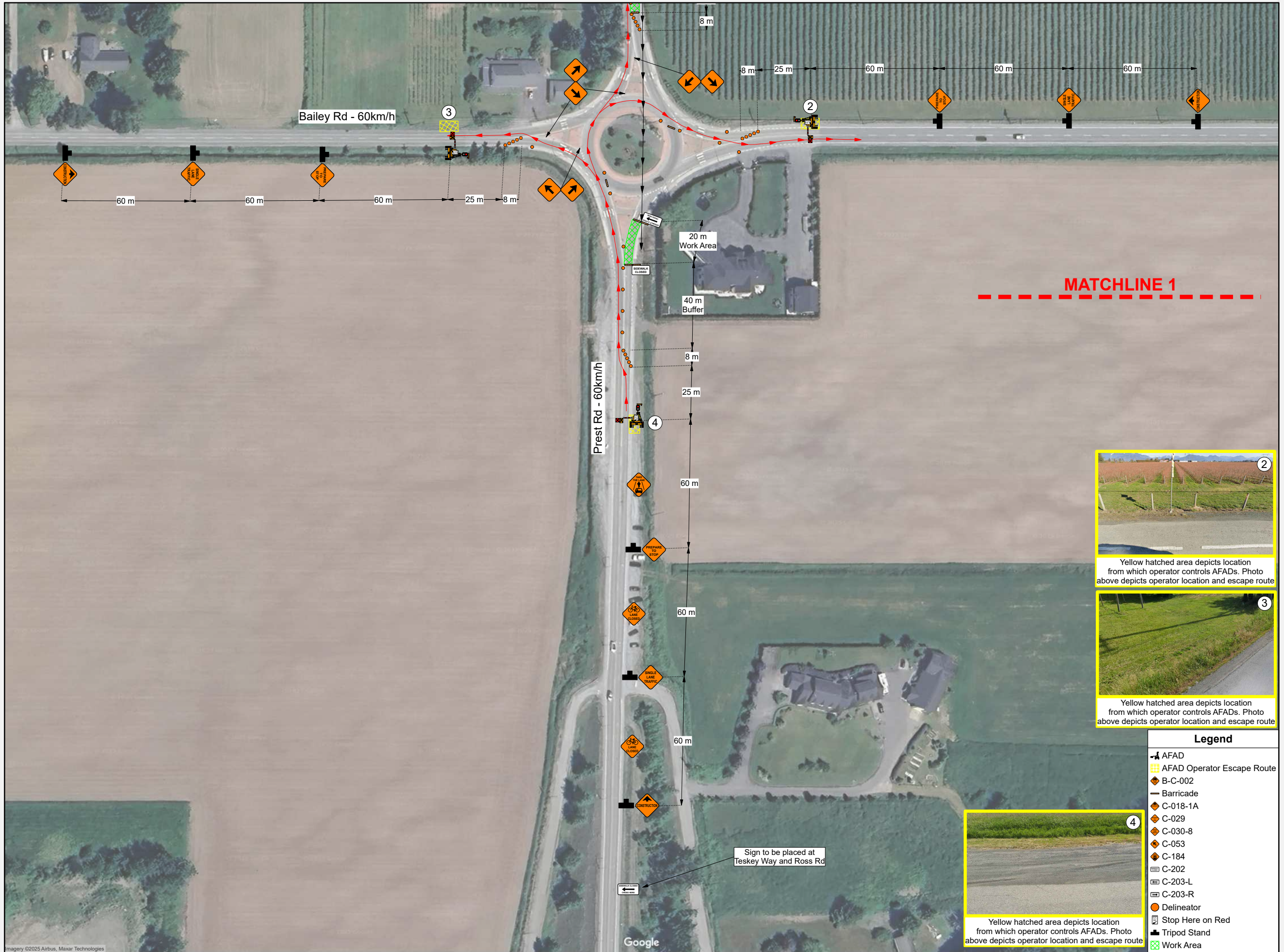
**UNIVERSAL**  
GROUP

9770 199a St, Langley	604-444-3732
Design By	Hunter Delalla
SRN	5841
Date	2025-11-28
Governing Authority	Contractor
 	
Site Contact	Danny Wilkinson
	604-837-6711
PO/WO/Network	2901501
Project Date/Time	TBD
Figure Number	12.2, ITC
Drawing No.	003A
Revision No.	00
Job location: Prest Rd & Bailey Rd Closure description: NB Travel Lane Closure - Single Lane Alternating Roundabout Job description: Telus Utility Work - Pole Access for Aerial Placing and Pole Transfers	
Notes: - Plan was prepared in accordance with MoTI TMM 2020. - Client has been notified of the WorkSafeBC OHS Regulations Part 18 amendment & it is their responsibility to ensure site compliance. - Plan must be reviewed if there are any changes to the findings of risk assessment (provided), or after one year. - Implementation of set up to follow the process outlined in the SJP-019 Device Installation Safe Job Procedure. - Should no AFADs be available at the time of project, 7.8.7.8.1, or 7.8.2 to be implemented. - Advanced Warning Sign distances may be shortened to suit urban block length. - 3.5m lane width to be maintained. - AFAD Operator to identify & illustrate escape route once on site. - Should the escape route illustrated become no longer viable, the traffic control onsite to note change in position on FLRA. - Driveway access to be maintained. - After working hours, road configuration to be re-instated. - AFAD to preform ITC (3 minutes maximum) while cable is pulled across the road.	
Plan Orientation	Posted Speed
	
Plan Scale	
 1 : 1708 (1cm = 17m)	
Sheet	1 of 2










 <b>UNIVERSAL GROUP</b>	
9770 199a St, Langley	604-444-3732
Design By	Hunter Delalla
SRN	5841
Date	2025-11-28
Governing Authority	Contractor
	
Site Contact	Danny Wilkinson
	604-837-6711
PO/WO/Network	2901501
Project Date/Time	TBD
Figure Number	12.2, ITC
Drawing No.	003B
Revision No.	00
<p>Job location: Prest Rd &amp; Bailey Rd</p> <p>Closure description: NB Travel Lane Closure</p> <p>- Single Lane Alternating Roundabout</p> <p>Job description: Telus Utility Work - Pole Access for Aerial Placing and Pole Transfers</p>	
<p>Notes:</p> <ul style="list-style-type: none"> <li>- Plan was prepared in accordance with MoTI TMM 2020.</li> <li>- Client has been notified of the WorkSafeBC OHS Regulations Part 18 amendment &amp; it is their responsibility to ensure site compliance.</li> <li>- Plan must be reviewed if there are any changes to the findings of risk assessment (provided), or after one year.</li> <li>- Implementation of set up to follow the process outlined in the SJP-019 Device Installation Safe Job Procedure.</li> <li>- Should no AFADs be available at the time of project, 7.8, 7.8.1, or 7.8.2 to be implemented.</li> <li>- Advanced Warning Sign distances may be shortened to suit urban block length.</li> <li>- 3.5m lane width to be maintained.</li> <li>- AFAD Operator to identify &amp; illustrate escape route once on site.</li> <li>- Should the escape route illustrated become no longer viable, the traffic control onsite to note change in position on FLRA.</li> <li>- Driveway access to be maintained.</li> <li>- After working hours, road configuration to be re-instated.</li> <li>- AFAD to preform ITC (3 minutes maximum) while cable is pulled across the road.</li> </ul>	
<p>Plan Orientation</p> 	<p>Posted Speed</p> 
<p>Plan Scale</p>  <p>1 : 1708 (1cm = 17m)</p>	
Sheet	2 of 2

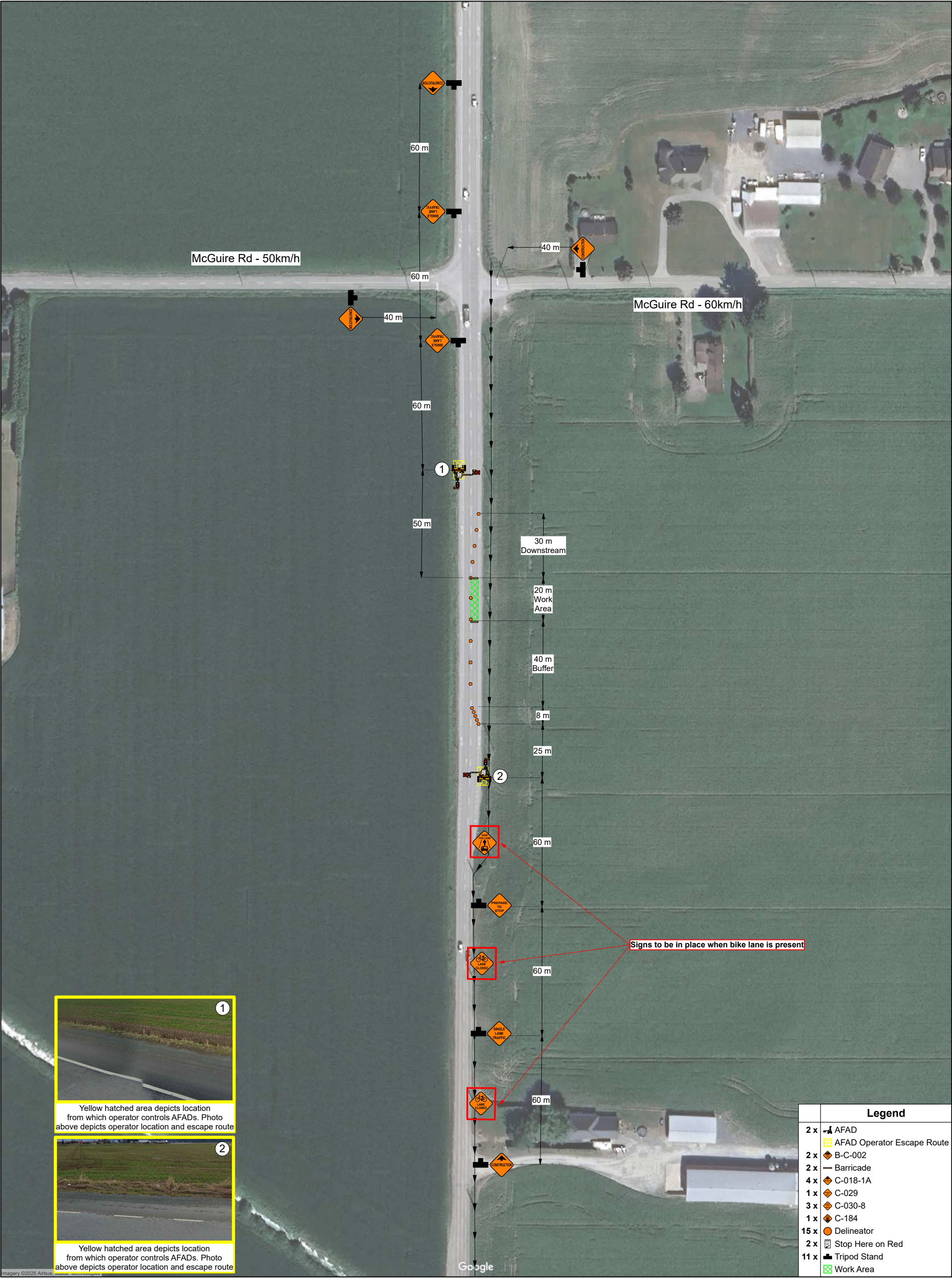











 <div>UNIVERSAL GROUP</div>		Governing Authority 	Contractor 	<div>Notes:</div> <ul style="list-style-type: none"><li>- Plan was prepared in accordance with MoTI TMM 2020.</li><li>- Client has been notified of the WorkSafeBC OHS Regulations Part 18 amendment &amp; it is their responsibility to ensure site compliance.</li><li>- Plan must be reviewed if there are any changes to the findings of risk assessment (provided), or after one year.</li><li>- Implementation of set up to follow the process outlined in the SJP-019 Device Installation Safe Job Procedure.</li><li>- Should no AFADs be available at the time of project, 7.8,7.8.1, or 7.8.2 to be implemented.</li><li>- Advanced Warning Sign distances may be shortened to suit urban block length.</li><li>- 3.5m lane width to be maintained.</li><li>- AFAD Operator to identify &amp; illustrate escape route once on site.</li><li>- Should the escape route illustrated become no longer viable, the traffic control onsite to note change in position on FLRA.</li><li>- Driveway access to be maintained.</li><li>- After working hours, road configuration to be re-instated.</li><li>- AFAD &amp; TCP to preform ITC (3 minutes maximum) while cable is pulled across the road.</li></ul>	<div>Plan Orientation</div> 
9770 199a St, Langley	604-444-3732	Site Contact	Danny Wilkinson		
Designed By	Hunter Delalla		604-837-6711		
SRN	5841	PO/WO/Network	2901501		
Date	2025-11-27	Project Date/Time	TBD		
<div>Plan Scale</div>  <div>1 : 1708 (1cm = 17m)</div>		Figure	7.9, ITC		
		Drawing No.	001		
		Revision No.	00		
Sheet <div>1 of 1</div>		Job Location: Prest Rd & McGuire Rd Job Description: Telus Utility Work - Pole Access for Aerial Placing and Pole Transfers Closure Description: NB Travel Lane Closure - SLAT w/ AFADS - ITC			





<div><div>UNIVERSAL GROUP</div></div>		<div>Governing Authority</div> <div></div>	<div>Contractor</div> <div></div>	<div>Notes:</div> <ul style="list-style-type: none"><li>- Plan was prepared in accordance with MoTI TMM 2020.</li><li>- Client has been notified of the WorkSafeBC OHS Regulations Part 18 amendment &amp; it is their responsibility to ensure site compliance.</li><li>- Plan must be reviewed if there are any changes to the findings of risk assessment (provided), or after one year.</li><li>- Implementation of set up to follow the process outlined in the SJP-019 Device Installation Safe Job Procedure.</li><li>- Should no AFADs be available at the time of project, 7.8.7.8.1, or 7.8.2 to be implemented.</li><li>- Advanced Warning Sign distances may be shortened to suit urban block length.</li><li>- 3.5m lane width to be maintained.</li><li>- AFAD Operator to identify &amp; illustrate escape route once on site.</li><li>- Should the escape route illustrated become no longer viable, the traffic control onsite to note change in position on FLRA.</li><li>- Driveway access to be maintained.</li><li>- After working hours, road configuration to be re-instated.</li><li>- Closure to move Southbound along Prest Rd from McGuire Rd to Bailey Rd and be implemented as needed.</li></ul>	<div>Plan Orientation</div> <div></div>
9770 199a St, Langley	604-444-3732	Site Contact	Danny Wilkinson		<div>Posted Speed</div> <div><div>MAXIMUM</div><div>60</div><div>km/h</div></div>
Designed By	Hunter Delalla		604-837-6711		
SRN	5841	PO/WO/Network	2901501		
Date	2025-11-27	Project Date/Time	TBD		
<div>Plan Scale</div> <div></div> <div>1 : 1708 (1cm = 17m)</div>		Figure	7.9, ITC		
		Drawing No.	002		
		Revision No.	00		
Sheet		1 of 1		Job Location: 6902 Prest Rd Job Description: Telus Utility Work - Pole Access for Aerial Placing and Pole Transfers Closure Description: NB Travel Lane Closure - SLAT w/ AFADS - ITC	